

*T. Mark Ellison*

---

# The Anti-Doppel Bias

Cognitive Processing,  
Behavioural  
Difference and  
Language Change

---



ARC CENTRE OF EXCELLENCE FOR  
**THE DYNAMICS OF LANGUAGE**



The Wellsprings of  
Linguistic Diversity



Australian  
National  
University



*in collaboration with*

---

**Luisa Miceli**

---

CoEDL Affiliate, UWA



ARC CENTRE OF EXCELLENCE FOR  
**THE DYNAMICS OF LANGUAGE**



THE UNIVERSITY OF  
**WESTERN  
AUSTRALIA**



# LANGUAGE MONITORING IN BILINGUALS AS A MECHANISM FOR RAPID LEXICAL DIVERGENCE

T. MARK ELLISON

*Australian National University*

LUISA MICELI

*University of Western Australia*

Recent studies have highlighted divergent change as a more common outcome of language contact than previously thought. While convergent change is often attributed to bilingual cognitive pressures, divergent change has usually been explained by appealing to sociocultural factors. We argue that the effects of social pressures on linguistic systems must nevertheless be realized in how language is processed in the individual bilingual speaker and, therefore, that divergent change is also ultimately rooted in bilingual cognition. Since lexical forms are most susceptible to contact-induced divergent change we focus on their production. We begin by developing a cognitive model that combines Grosjean's language mode with a later output-monitoring stage. The parameters to the model are then fit to the results of an experiment in which bilinguals are seen to form the basis of a series of multi-agent simulations with large proportions of bilinguals. The psycholinguistic study of bilingual lexical selection, the construction of phylogenies, and the reconstruction of language family histories.

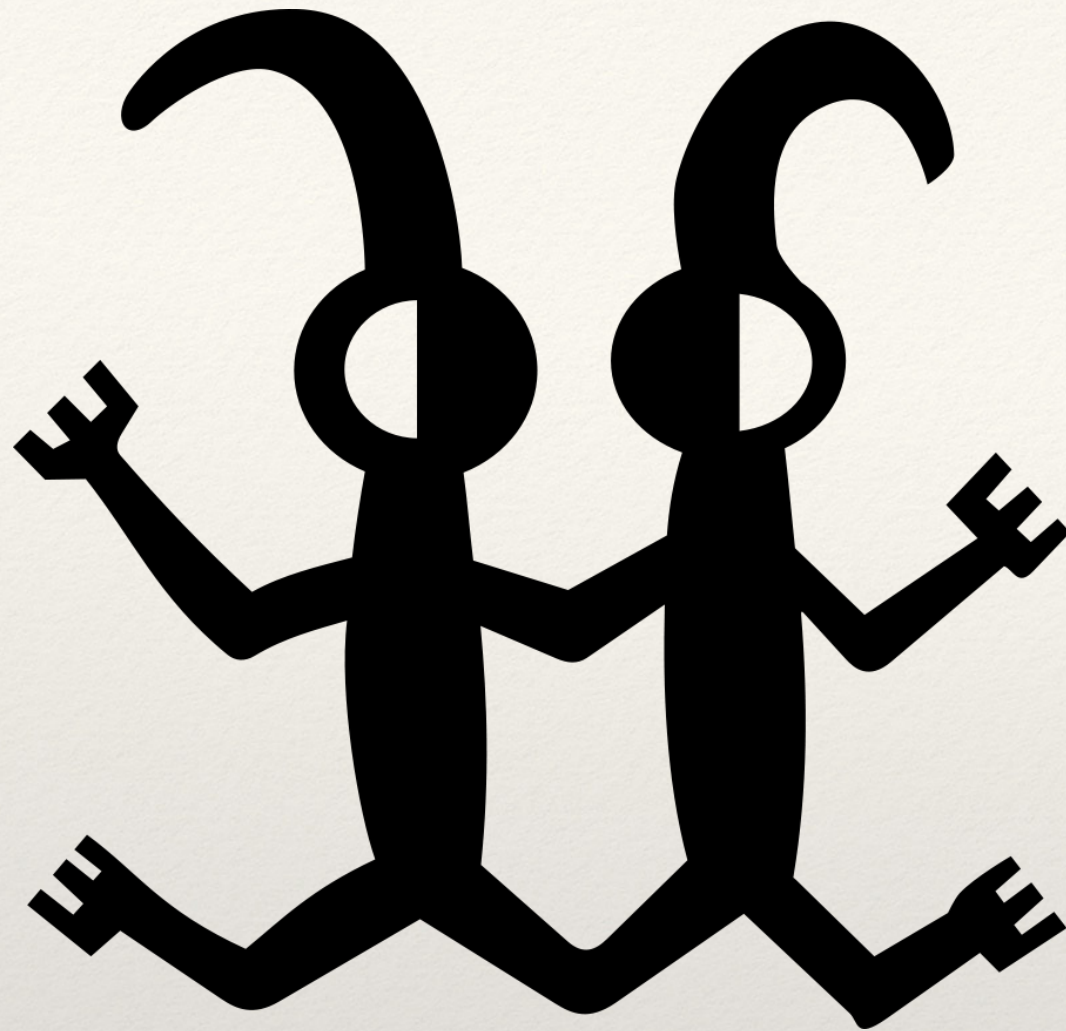
Ellison, T.M. & L. Miceli (2017) **Language Monitoring in Bilinguals as a Mechanism for Rapid Lexical Divergence**, *Language*. 93(2):255-287.

*Language* (2017)

## Monitoring, Bilingualism, and Language Divergence

## Processing





- a **DOPPEL** is a form-meaning pair that is recognisably similar across 2 or more languages

	Cognate	Non-Cognate
Doppel	EN: <b>water</b> NL: <b>water</b>	EN: <b>information</b> PL: <b>informacja</b>
Non-Doppel	EN: <b>two</b> HY: երկու (erku)	EN: <b>sky</b> NL: <b>hemel</b>

*ALS 2012, Language 2017*

# Doppels

- Note that **doppels** are called **cognates** in applied- linguistics and psycholinguistics

Processing



Dutch: **foto**

English: picture, **photo**

Which English word will Dutch-English bilinguals choose (relative to what monolinguals prefer)?

*ALS 2012, Language 2017*

---

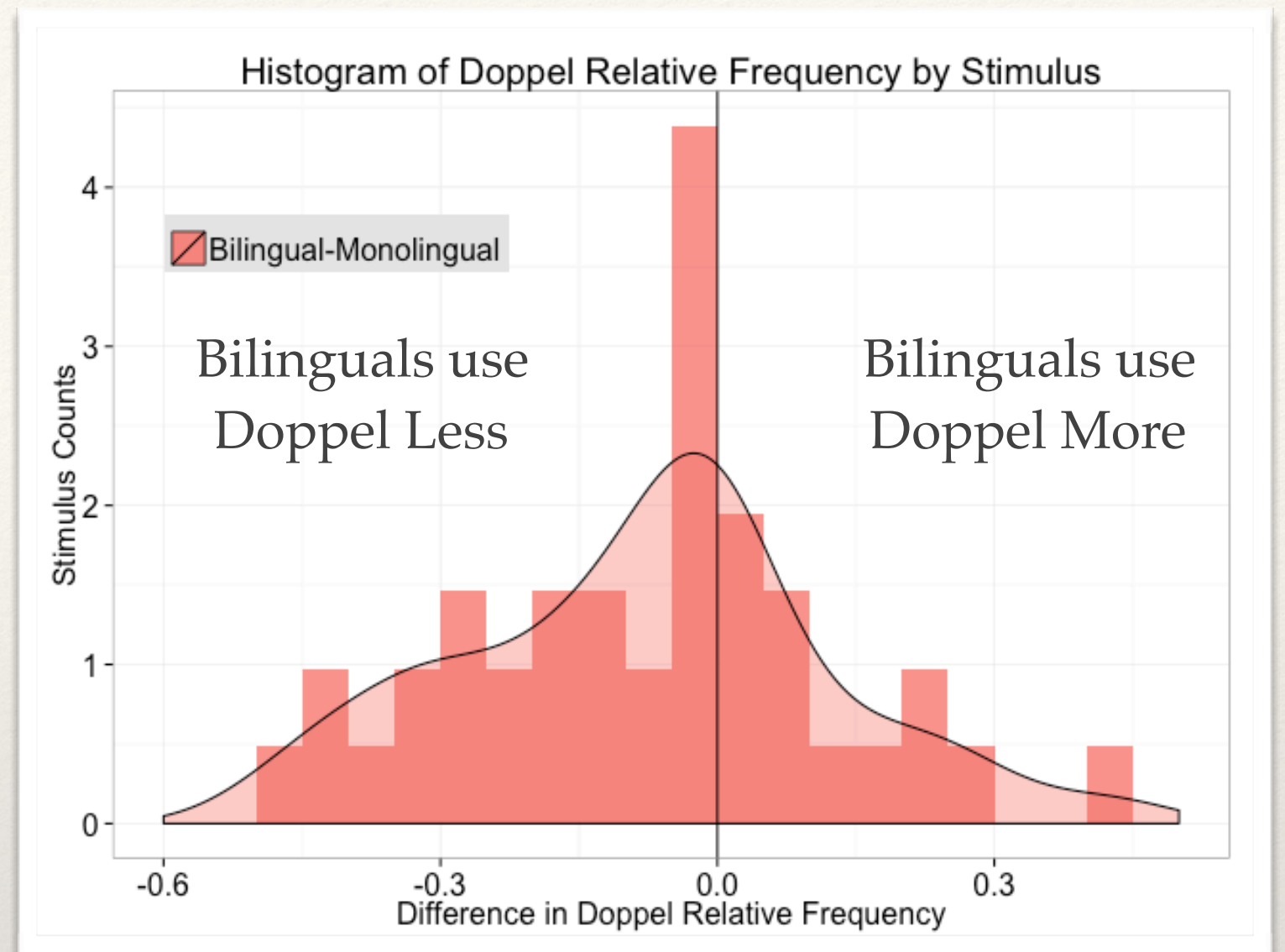
**Bilingual Behaviour**

Processing

---



Bilinguals use doppels less frequently than monolinguals



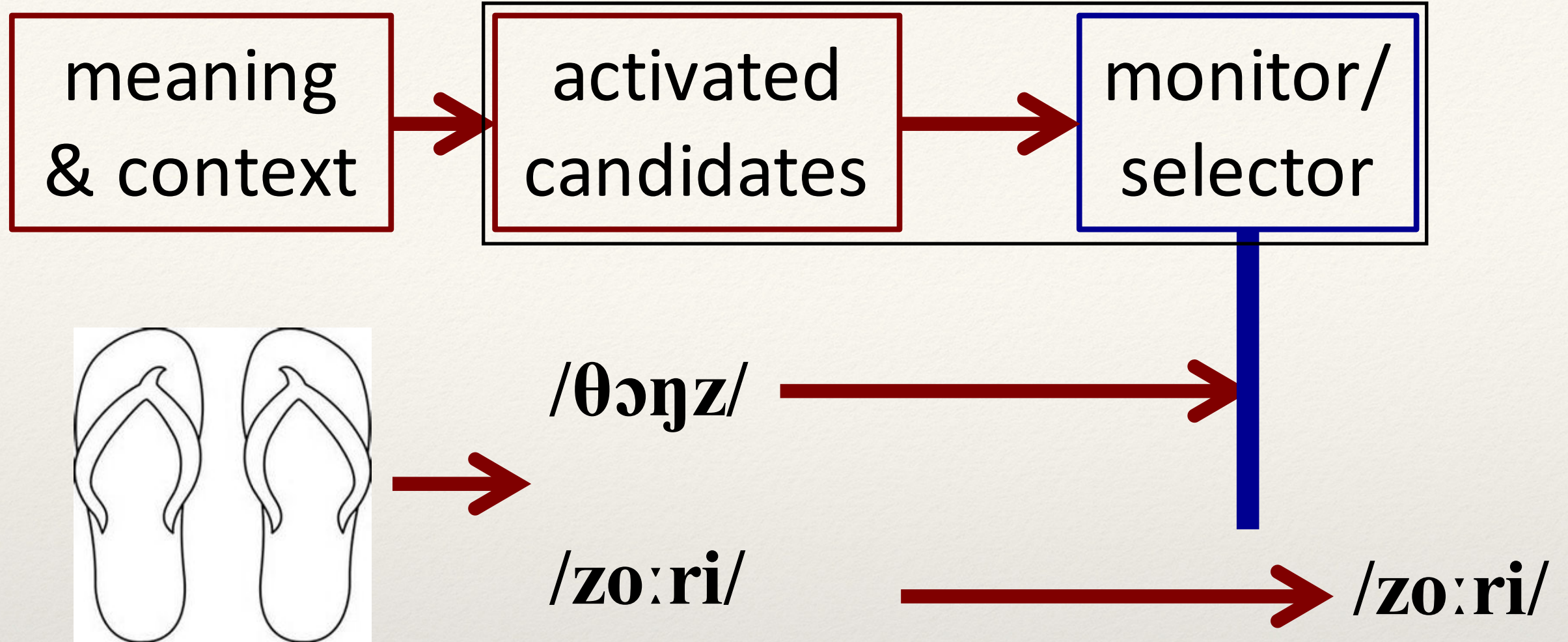
*ALS 2012, Language 2017*

Bilingual Behaviour

Processing



# Associative Memory + Modelling



ALS 2012, Language 2017

## Activation and Monitoring

Processing



$$P_G(f | s; t, b) = (1-b) P_{2M}(f | s; t) + b P_{BM}(f | s)$$

$$P_L(l | f, s; t, p_G, m) = m k_L P_M(f | s; l) + (1-m) / |L|$$

$$P_C(f | s; t, b, m) = k P_L(l=t | f, s; t, b, m) P_G(f | s; t, b)$$

*Comparative Australian Languages Workshop 2015, Language 2017*

---

Model of Bilingual  
Lexical Selection

Processing

---



Picture-naming tasks show a doppel *advantage*  
(faster response times)

❖ e.g. Costa, Caramazza, & Sebastian-Galles (2000)  
which apparently *conflicts* with anti-doppel bias:  
which inhibits shared vocabulary

---

Picture-Naming  
Quandary

Processing

---



But these experiments:

- a) minimise ambiguity in stimuli
- b) disregarded non-target responses

---

Picture-Naming  
Quandary

Processing

---



## Transdisciplinary and Innovation Grant Application

*Please note we require the minimum font size to be 11pt (Arial)*

Applicant Name:	T. Mark Ellison
University/Institution:	Australian National University
Relevant Programs and/or Threads:	Evolution, Processing, Shape
Chief Investigator & Administering Institution:	Paola Escudero (Learning/Processing), Western Sydney University
Other Centre Collaborators & Institution: <small>(all collaborators need email confirmation of involvement to <a href="mailto:coedl@anu.edu.au">coedl@anu.edu.au</a>)</small>	Luisa Miceli (UWA, affiliate from 2016) Simon Greenhill (Evolution), ANU Niels Schiller (Leiden University, affiliate from 2016)

**Title of Project:** Picture-Naming, Synonymy and Language Divergence in Bilinguals

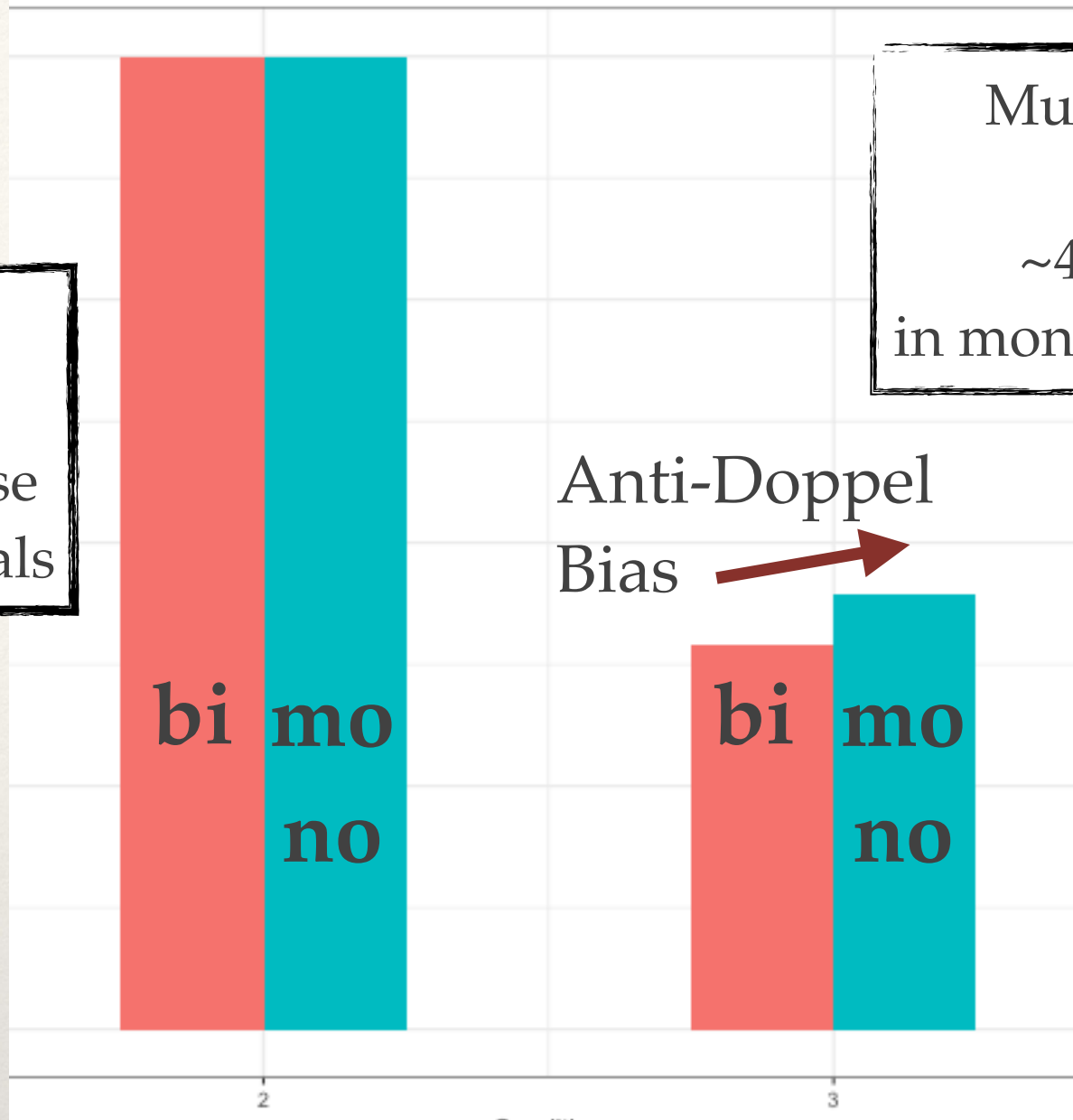
*TIG & now continued by UWA Collaboration grant to Luisa Miceli*

Picture-Naming  
& Options

Processing



Single Answer:  
Doppel  
100% Doppel Response  
in mono- and bi-linguals



Multiple possible answers  
including Doppel  
~45% Doppel Response  
in mono- and ~40% in bi-linguals

Replicates  
selection result  
from previous  
study

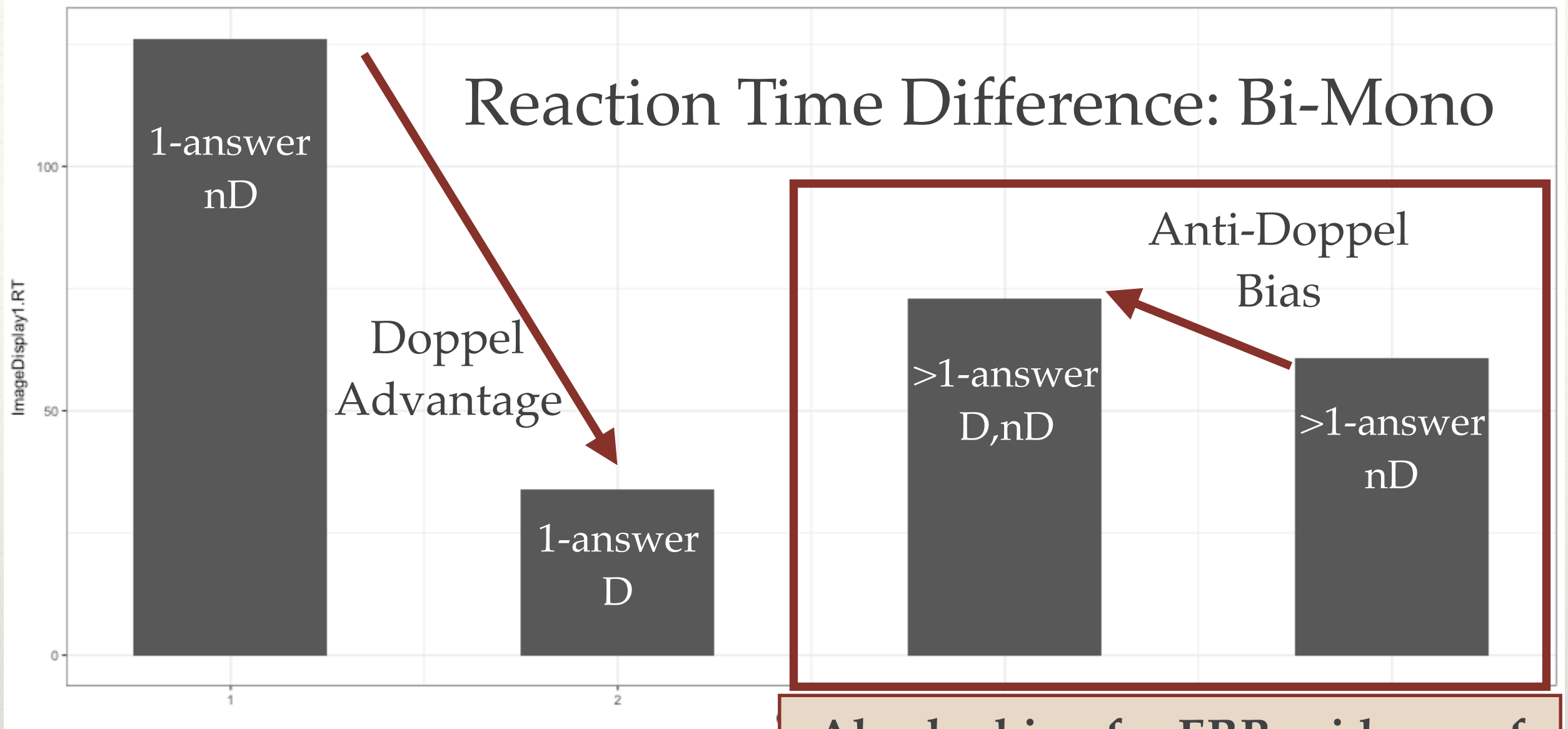
*Behavioural Results - Replication of Behavioural Choice*

# Picture-Naming with Options

Processing



# Reaction Time Difference: Bi-Mono



*Behavioural Results - Impact on Reaction Time*

Also looking for ERP evidence of conflict-triggered monitoring

# Picture-Naming with Options

Processing



Contact (bilingualism)  
leads to  
Convergence

---

Lexical Convergence

Shape

---



# The Wellsprings of Language Diversity

- ❖ why do we have linguistic diversity hotspots?
- ❖ can bilingualism lead to lexical diversity?



*ALS 2017*

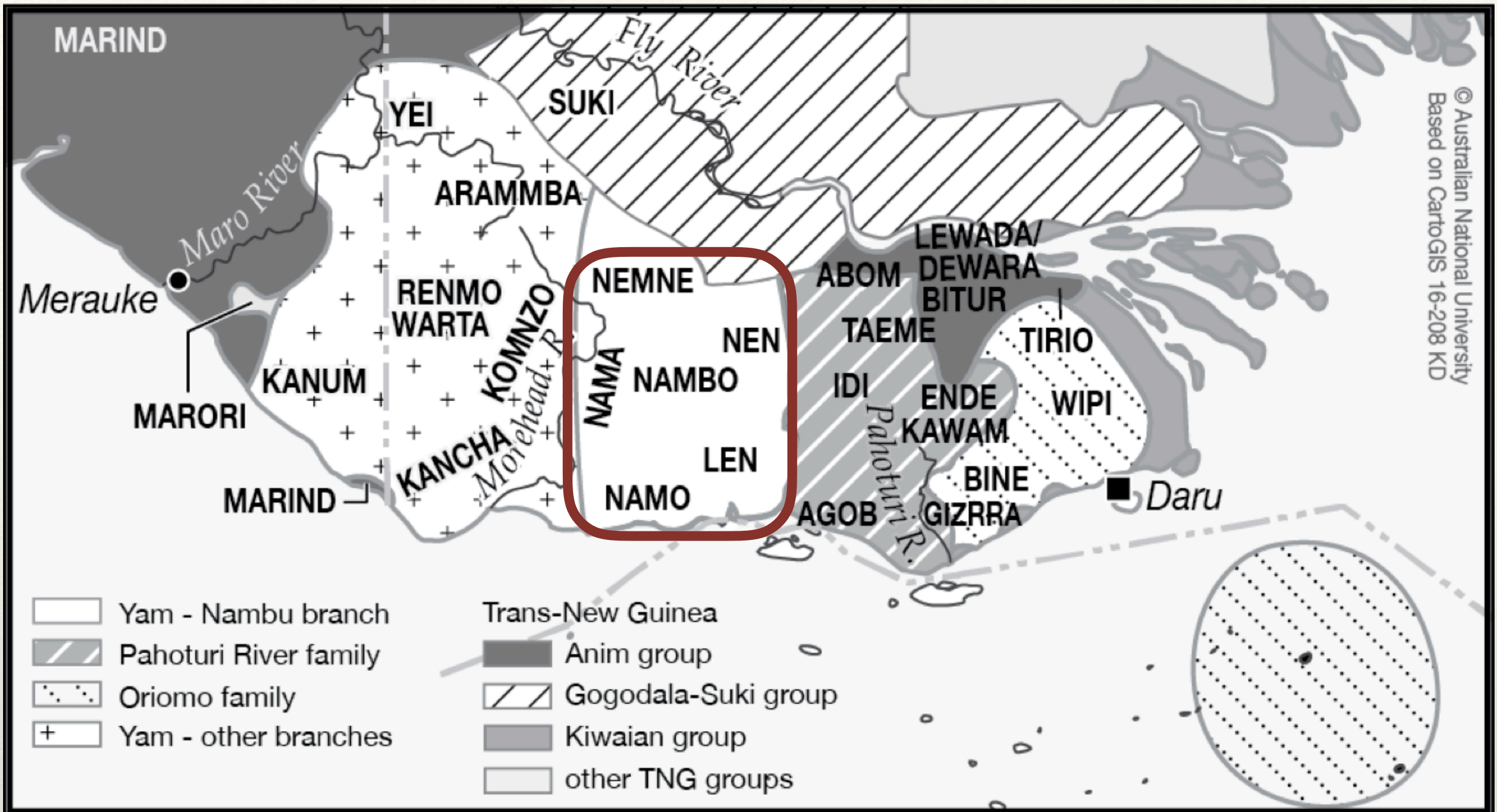
---

# Lexical Convergence

Shape

---



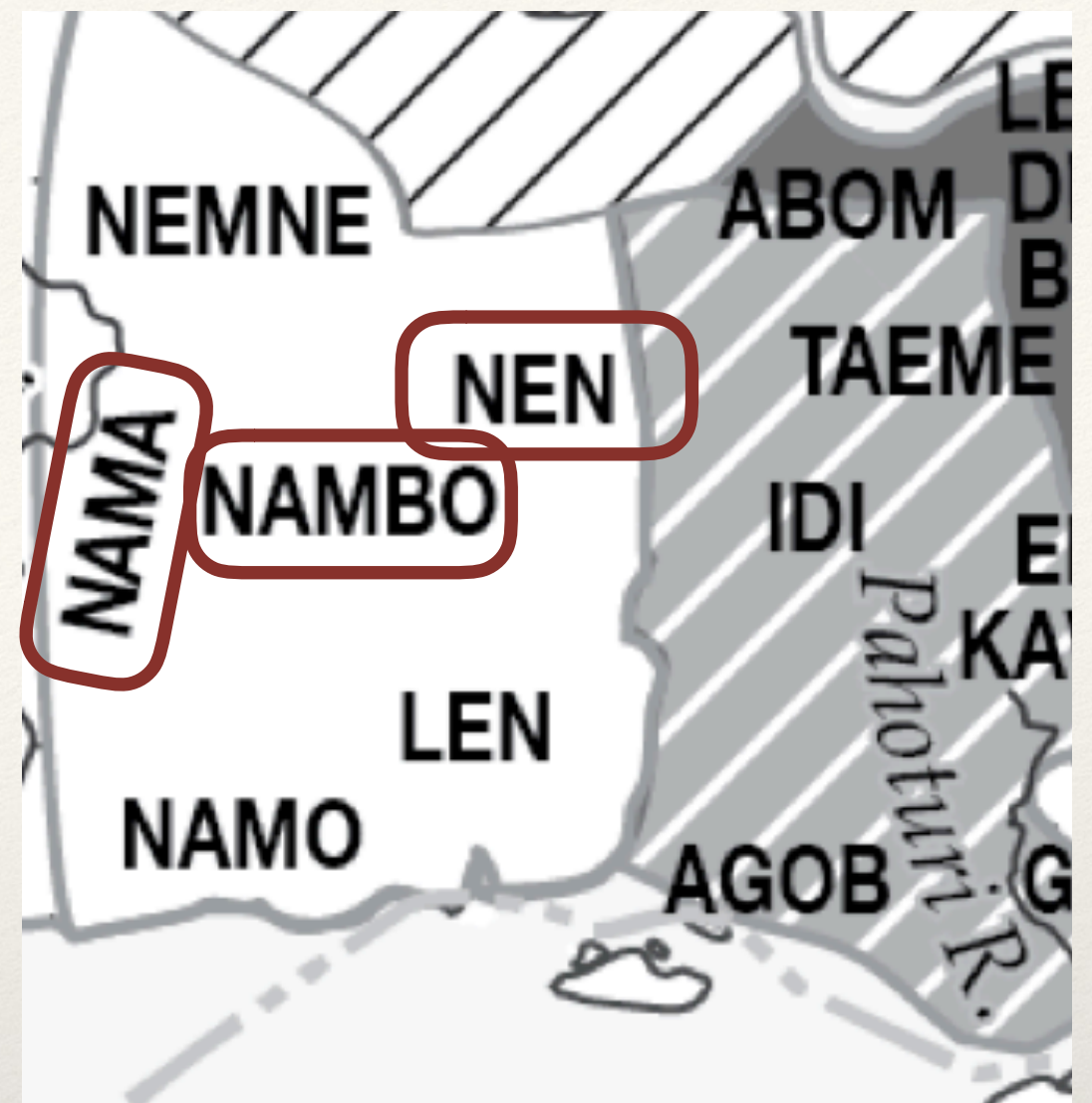


Lexical Convergence

Shape



- ❖ Presentation: ALT 2017  
*Diachronic typology meets contact typology: a regional case study from Southern New Guinea*
- ❖ long-term stable bilingualism



ALS 2017

---

# Lexical Convergence

Shape

---



	Nama	Nmbo	Nen
<b>FORM</b>			
Lexicon	←→		→←
<b>STRUCTURE</b>			
Grambank Measure	→←	←→	←→
Nominal Morphology	→←	←→	←→
Pronouns	→←	←→	←→

*ALT 2017 Diachronic typology meets contact typology: a regional case study from Southern New Guinea*

Lexical Convergence

Shape



Contact  
leads to  
Convergence (Structure/Lexicon)  
and/or  
Divergence (Lexicon)

*Language 2017*

---

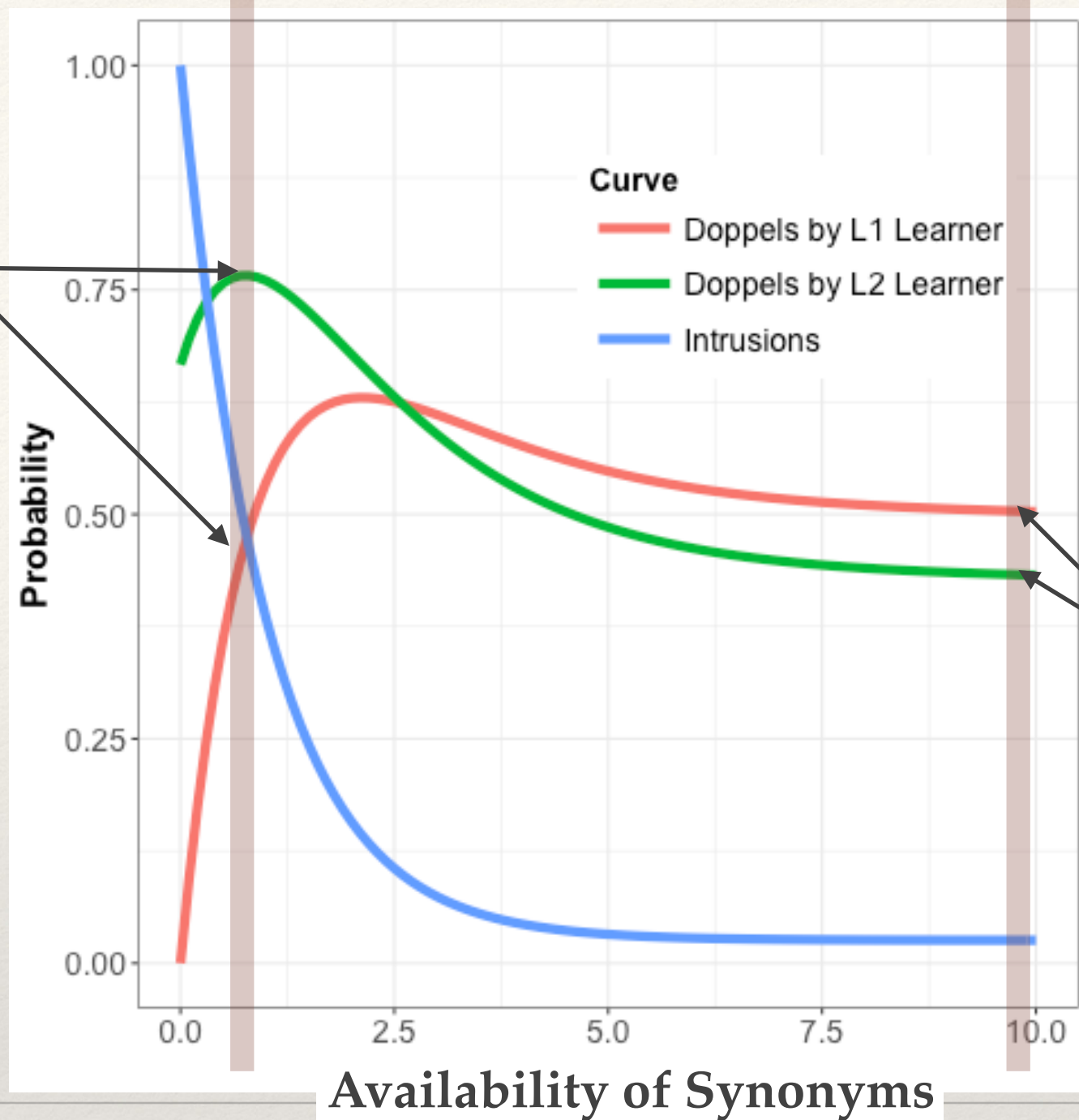
**Lexical Convergence**

Shape

---



Weak learners  
with few options  
use doppels  
more  
than  
monolinguals



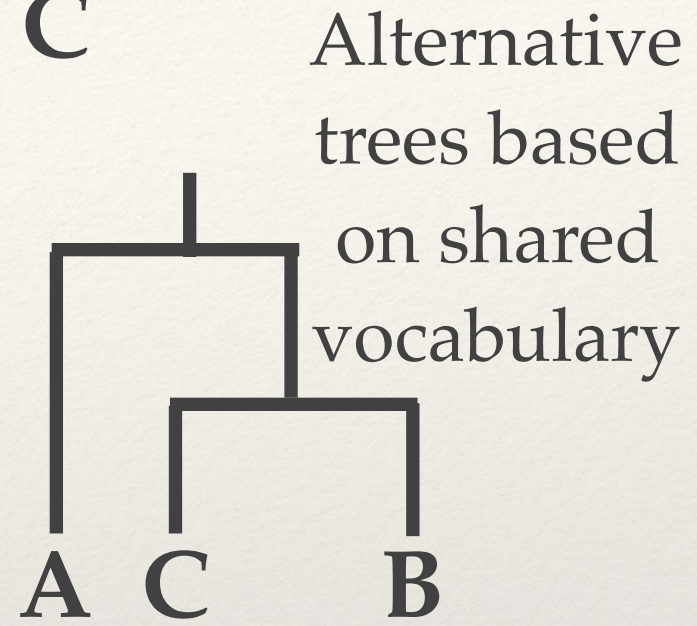
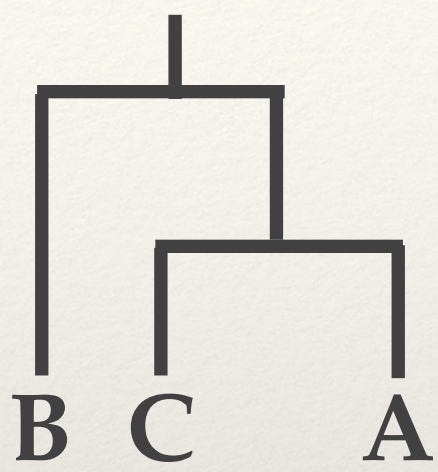
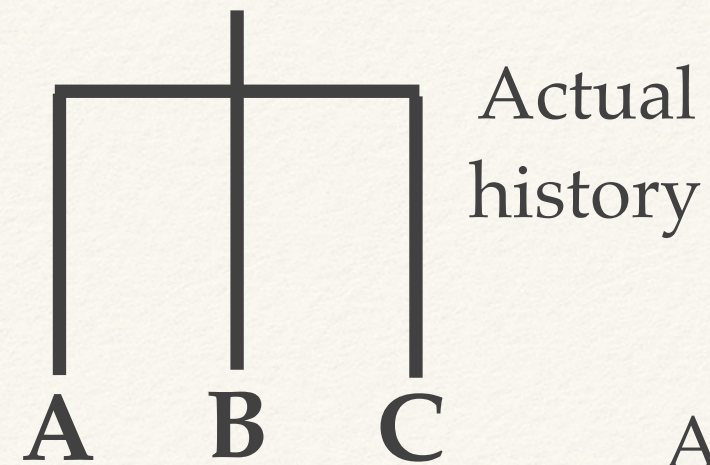
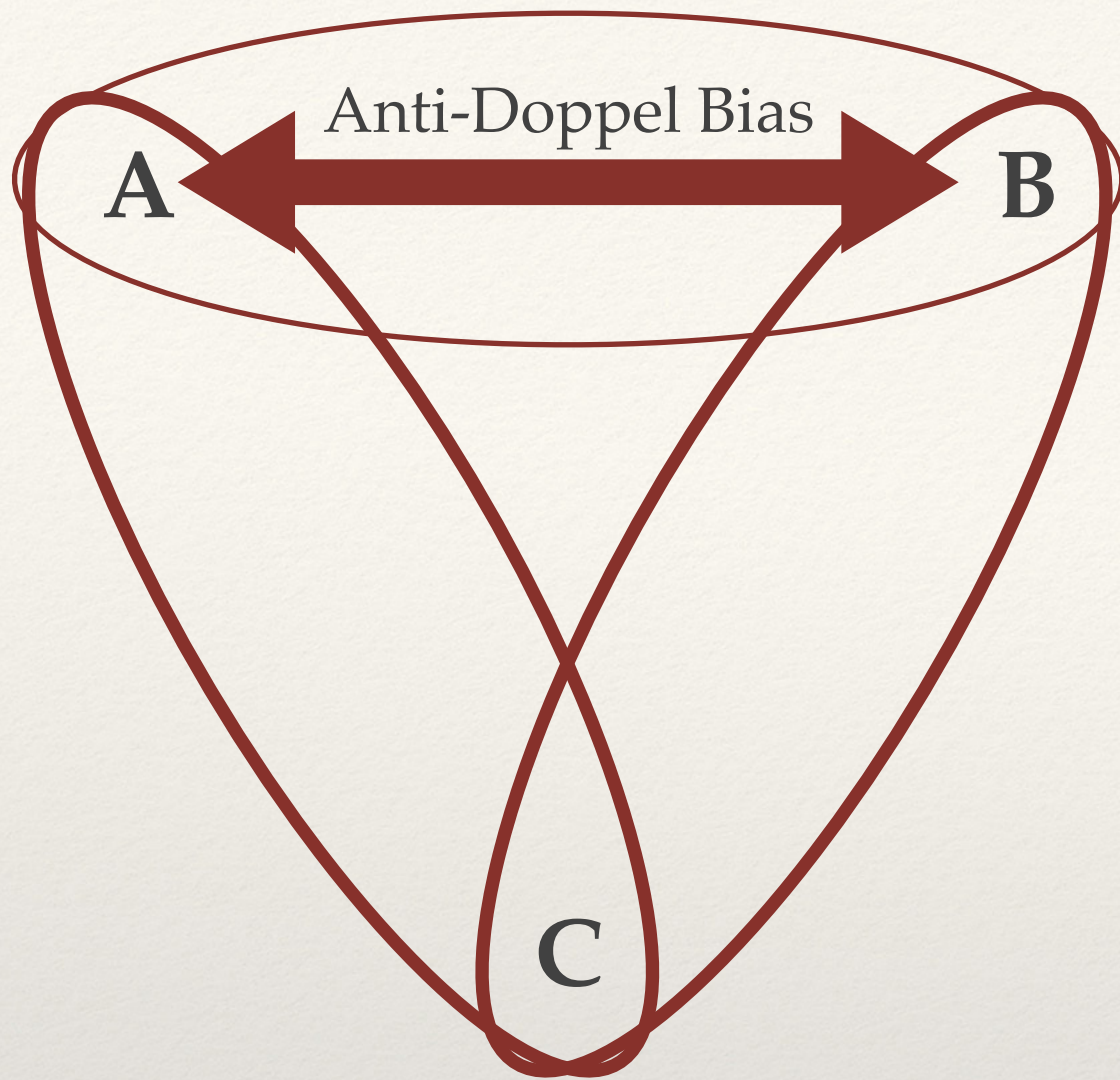
Strong learners  
with more  
options  
use doppels less  
than  
monolinguals

ICHL 2017

Weak and Strong  
Learners

Learning



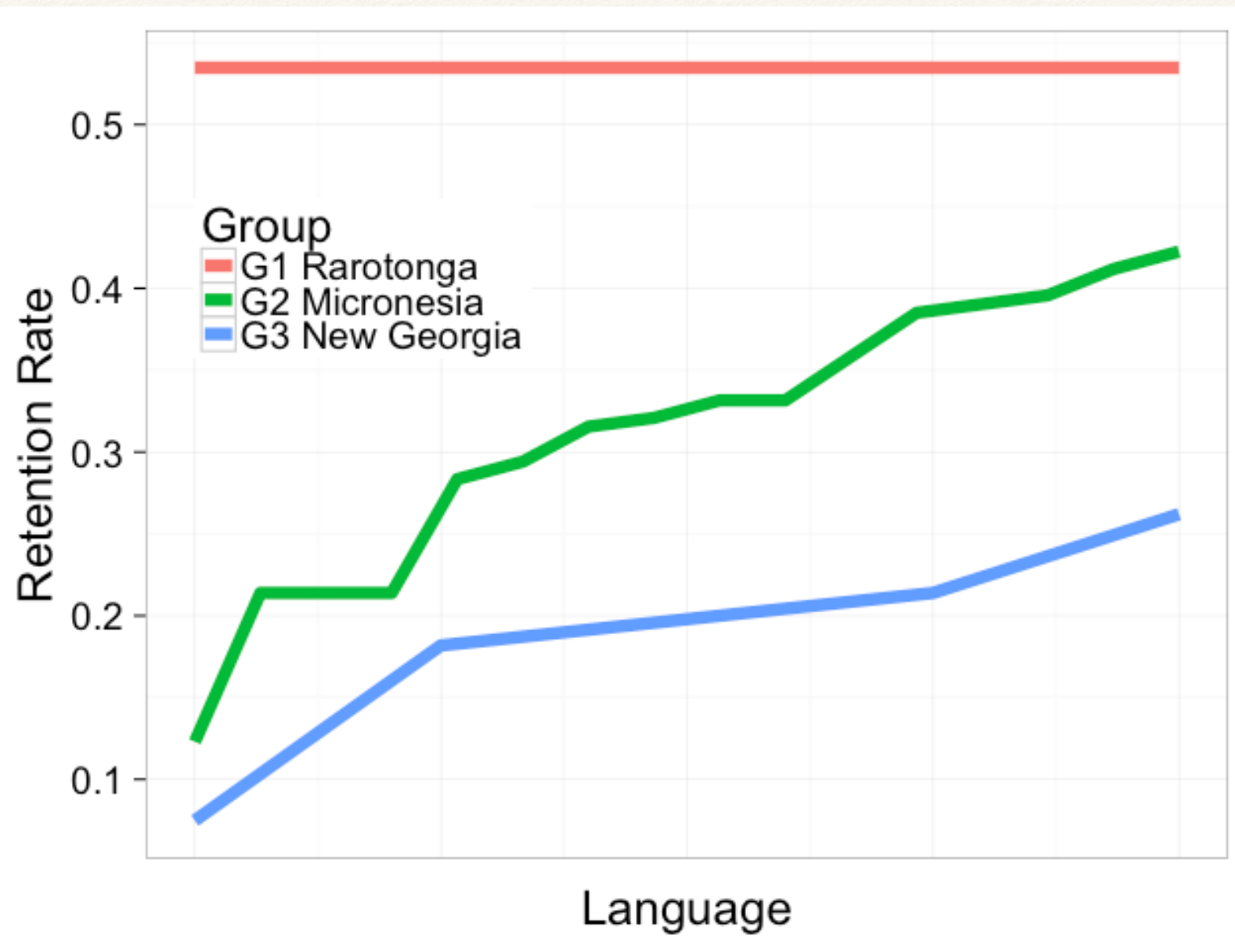


*ICHL 2015 Workshop: Non-cladistic approaches to language genealogy*

**Arboreal Problems**

Evolution





inter-  
language  
contact

Languages in  
contact lose more  
vocabulary

Miceli et al. (2016) ALS

Divergence in  
Oceania

Evolution



**egocentrism**

**iconicity**

frequency

identity

prestige

sentence interpretation &

configurationality

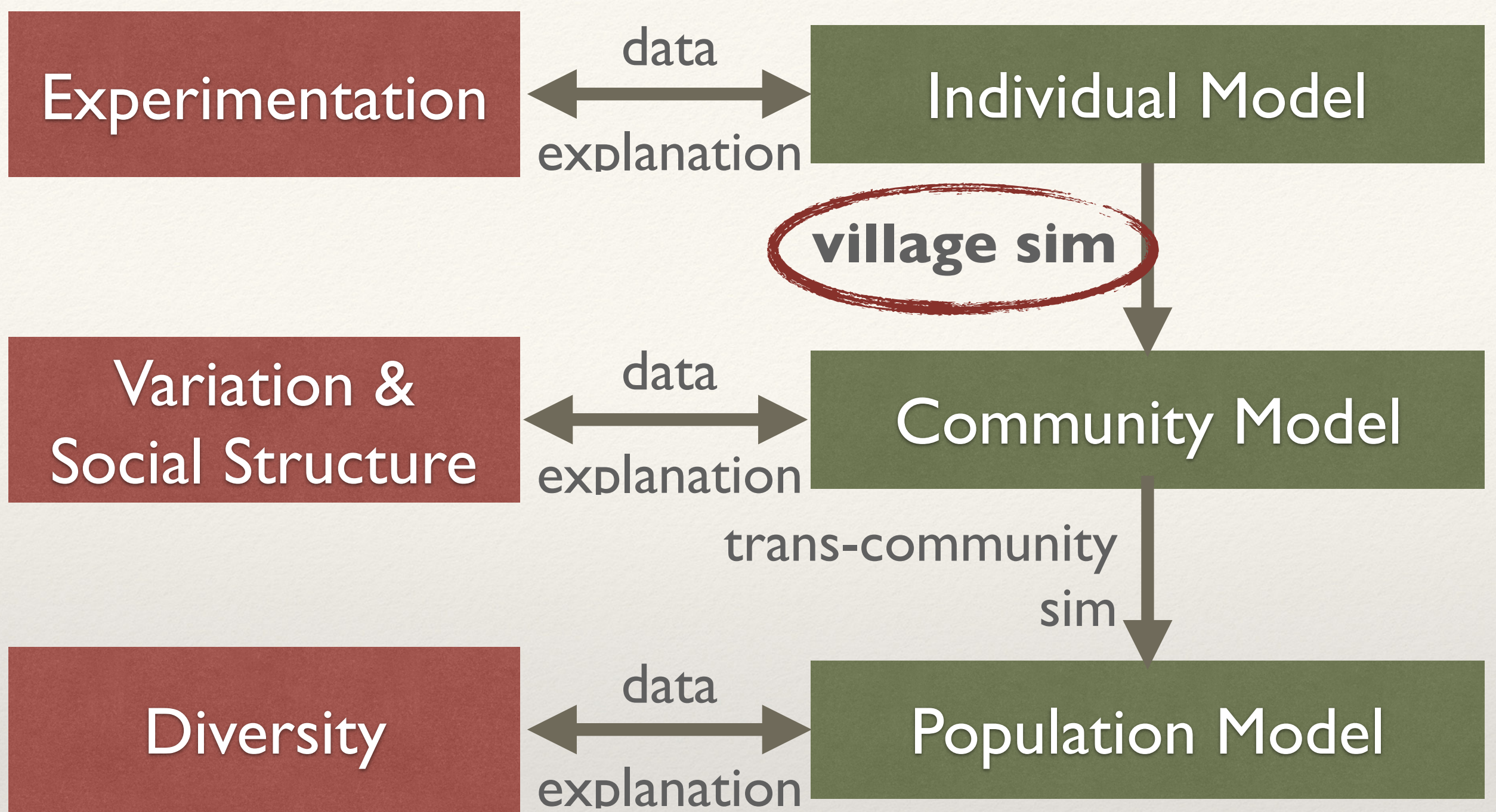
---

Future Work: adding  
to individual model

---

All





*Ellison & Kashima (2018) EvoLang*

Future Work: close agent-based models

All



**Thanks!**

**Doppel**

**Non-Doppel**

**Cognate**

**[dan̩kə]**

**[t<sup>h</sup>ø<sup>h</sup>k]**

**Non-Cognate**

**[t<sup>h</sup>æŋk]**

**[dʒɛ̃ki]**

<http://bld.markellison.net/>



---

# Bilingualism-Led Divergence

---

## **Publications**

- Ellison, T.M. & L. Miceli (2017) **Language monitoring in bilinguals as a mechanism for rapid lexical divergence**, *Language*.
- Ellison, T.M. & L. Miceli (2012) **Distinguishing Contact-Induced Change from Language Drift in Genetically Related Languages**. *Proceedings of the EACL Workshop on Computational Models of Language Acquisition and Loss*.

## **Presentations**

- Ellison, T.M. & L. Miceli (2017) **The Impacts of Bilingual Production Monitoring on Non-Dominant Language Lexica**. ICHL.
- Ellison, T.M. (2017) **Experimental semiotics, representational biases and the atoms of language change**. ICHL (workshop on Atoms of Language Change).
- Miceli, L. et al. (2016) **Can we identify bilingual-led lexical differentiation in Oceanic?** ALS.
- Ellison, T.M. & L. Miceli (2015) **Does Grosjean's Language Mode require Variable Language Activation?** ALS.
- Ellison, T.M. & L. Miceli (2015) **Language Discontinua: how Bilingual-Led Differentiation Disrupts Cladistic Modelling**. ICHL.
- Ellison, T.M. & L. Miceli (2015) **A Cognitive Model of Bilingual-Lead Differentiation and Convergence**. Comparative Australian Languages Workshop.
- L. Miceli & Ellison, T.M. (2015) **Looking for evidence of an anti-doppel bias in the Pilbara**. Comparative Australian Languages Workshop.
- Ellison, T.M. & L. Miceli (2013) **New Perspectives on Language Change: L2 Transmission and the Cognitive Basis for Contact-Induced Differentiation of Lexical Forms**. ICHL.
- Ellison, T.M. & L. Miceli (2012) **A cognitive model of contact-induced differentiation**. ALS.
- Ellison, T.M. & L. Miceli (2009) **Less-than-chance Similarity & Language Differentiation**. ALS.